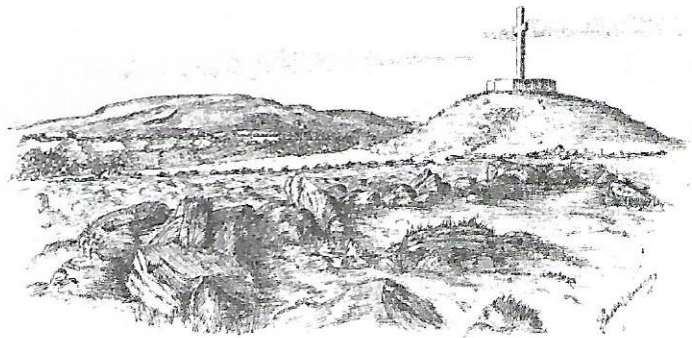


THE ARTIST'S EYE

Sandra Vernon

'Memories'



I CAN SEE MY HOUSE FROM HERE!

I first climbed Sheemore in 1971 while travelling between Dublin & Sligo, little realising that within a couple of years I would always be living within its sight.



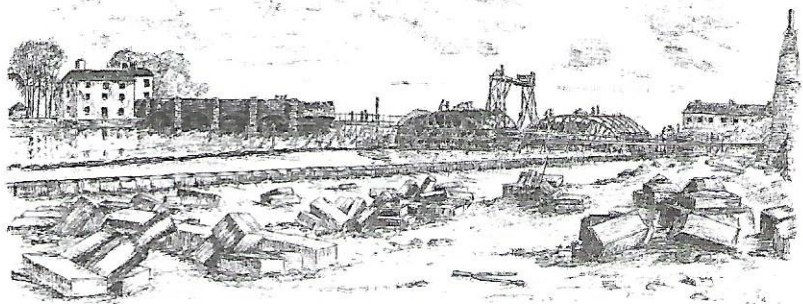
KILTOGHERT CREAMERY

When I first moved to Leitrim, 1972, the butter from here was on every single shop shelf; the road was terrible and flooded every winter... Now, all is gone; butter; floods and creamery.



LOUGH SCUR DOLMEN

One of my favourite spots in Leitrim: a postcard from early 60's shows the tree upright and flourishing and 25 years after drawing this...it is flourishing again.



TWO BRIDGES

Based on a faded old watercolour (now preserved in Dublin) this shows the original stone bridge and how the present bridge was constructed in approximately 1848.



MOON RIVER When I drew this first (as a commission for MBNA '02) my youngest grandson Josh had just gone on his first school trip on the Shannon. When he saw the picture, he said "That's the Moon River "...So logical.